

# Reflections on the Pandemic

## How We Can Respond to the Climate Crisis with Lessons from the Pandemic?

DVIDE WITTMAN  
PHOTOGRAPHY



London  
Environmental  
Network

# What We Do

*We are an environmental charity in London that aims to cultivate a more sustainable, healthier city.*

## VISION

London is known as one of the greenest and most resilient cities in Canada.

## MISSION

We build participation, collaboration, and capacity in our community to co-create positive environmental change.

ALUS  
Middlesex



can  
Bike  
London



Climate Emergency Action Plan Coalition  
ClimateActionLondon.ca @ClimateLonOnt



let's talk  
science



postcarbonlondon



Thames Talbot  
Land Trust



LEN Members



# Membership Focus Areas



**ECOSYSTEM  
HEALTH &  
CONSERVATION**



**SUSTAINABLE  
TRANSPORTATION**



**ENVIRONMENTAL  
EDUCATION**



**CLIMATE  
ACTION**



**ENERGY**



**POLLINATION &  
BEEKEEPING**



**SUSTAINABLE  
FOOD SYSTEMS**



**WATER  
STEWARDSHIP**



**WASTE**



**HORTICULTURE**



# What's Possible?

**Mutual Aid  
Networks**

**Doing What  
is Necessary**

**Pandemic level  
change**

**Rapid  
Change**

**Allocation of  
Resources**





# A Green & Just Recovery



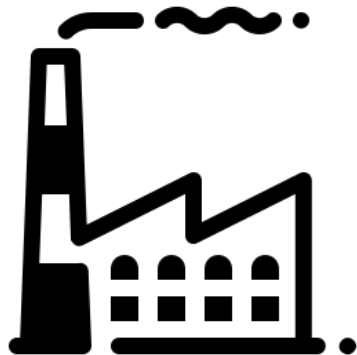
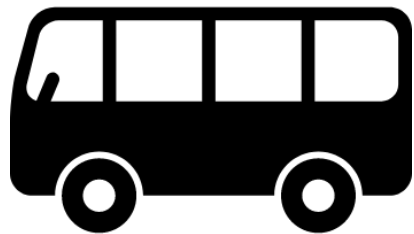
**New way to  
evaluate  
success**

**Work  
together**

**Rapid  
Change**

**Investment  
in green  
recovery**

# Get to Net-Zero by 2050







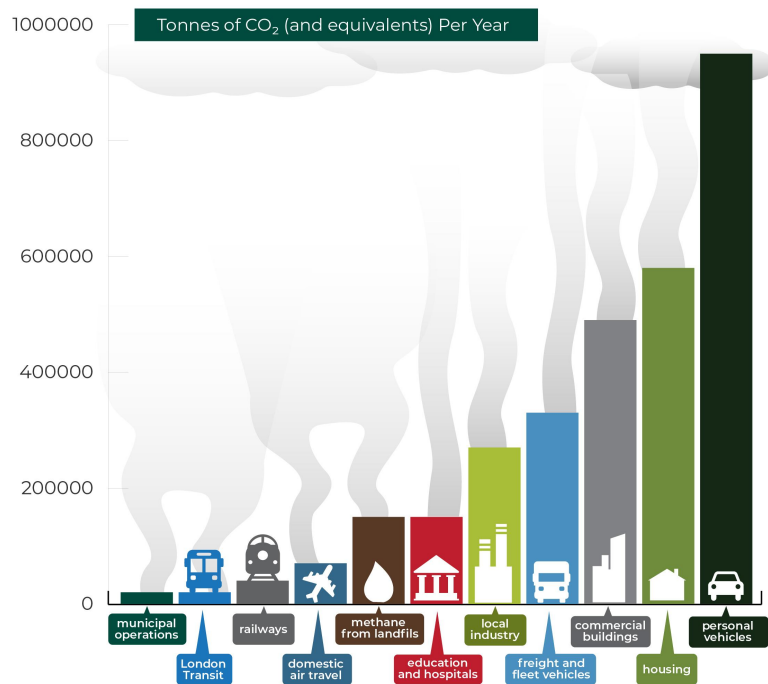
**How can you reduce  
your household's  
environmental  
footprint?**

**And help the  
green economy  
at the same  
time?**



# London's Greenhouse Gas Emissions

- ▶ IPCC predicts that we only have 10 years to reduce greenhouse gas emissions by 45%
- ▶ Households in Canada account for 45% of emissions.



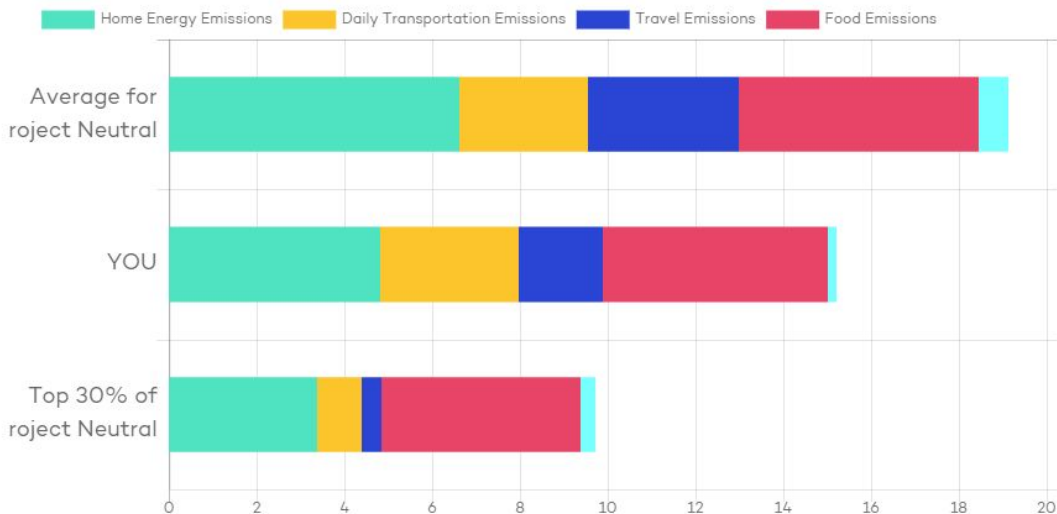
Total greenhouse gas emissions from London have decreased compared to the “peak” in 2007. In 2019, greenhouse gas emissions were 21 percent lower than 2007.

# Calculate Your Impact

## Your Household Carbon Impact

Your estimated carbon footprint is 15.2 tonnes CO<sub>2</sub>e per year. What does that look like? One tonne of CO<sub>2</sub> fills a balloon the size of a bus. Your annual carbon footprint can be visualized as 15 buses!

This is how your footprint compares with households of the same size\* (3 adults and 0 kids):



PROJECT  
neut~~r~~al

[projectneutral.org/london](https://projectneutral.org/london)

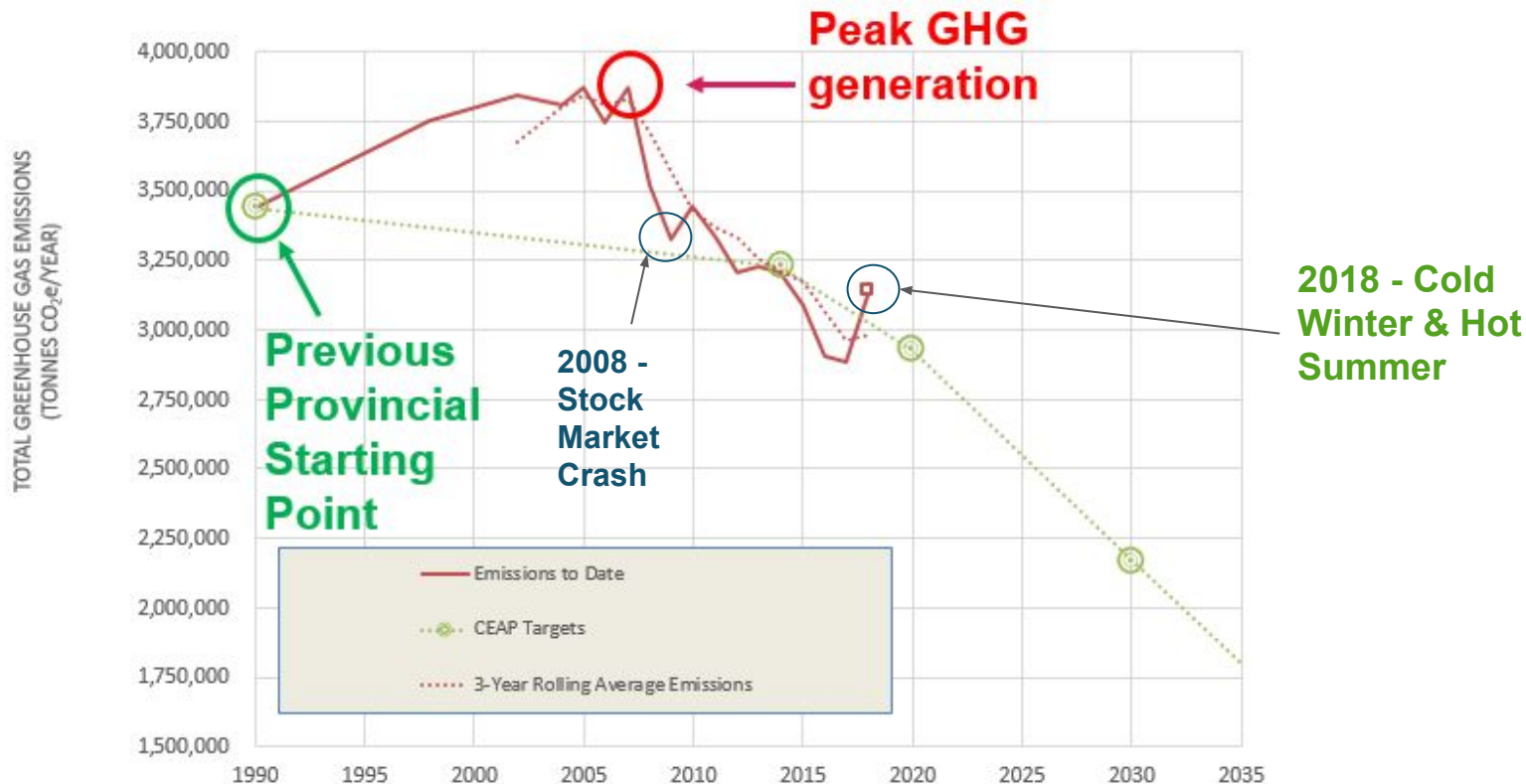




**Choose sustainable  
transportation  
(bus, bike, walk, EV)**

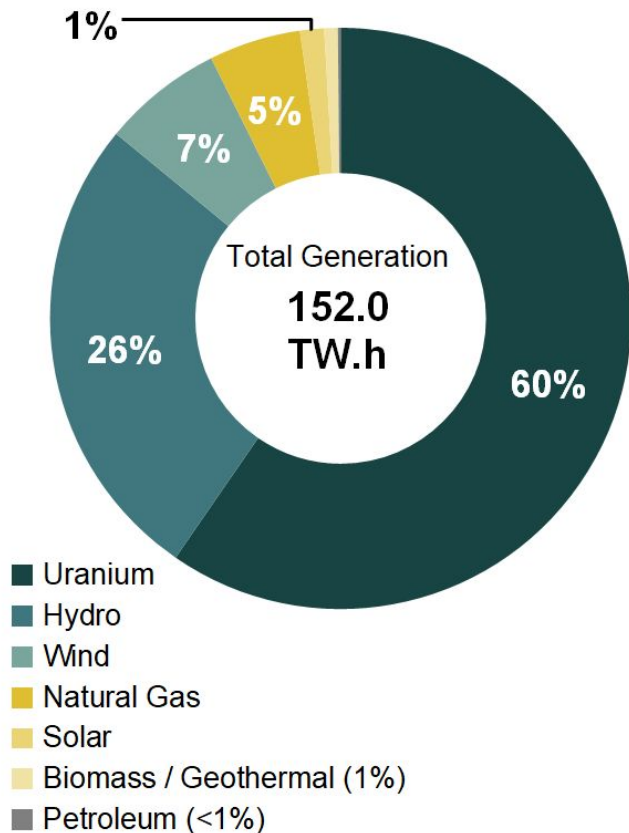


# London's Emissions & Targets





# Ontario's Energy & Electricity





**Stop subsidizing  
fossil fuels and invest  
in renewables**



# Biodiversity & Green Infrastructure



London has about 24% urban tree canopy, with 30-40% being healthy tree canopy coverage

SWONT has very few wetlands & urban green infrastructure - which contributes to flooding and combined sewer overflows

Private property has huge green infrastructure and biodiversity potential



# Green Infrastructure - Adapt



**Plant Native Species**

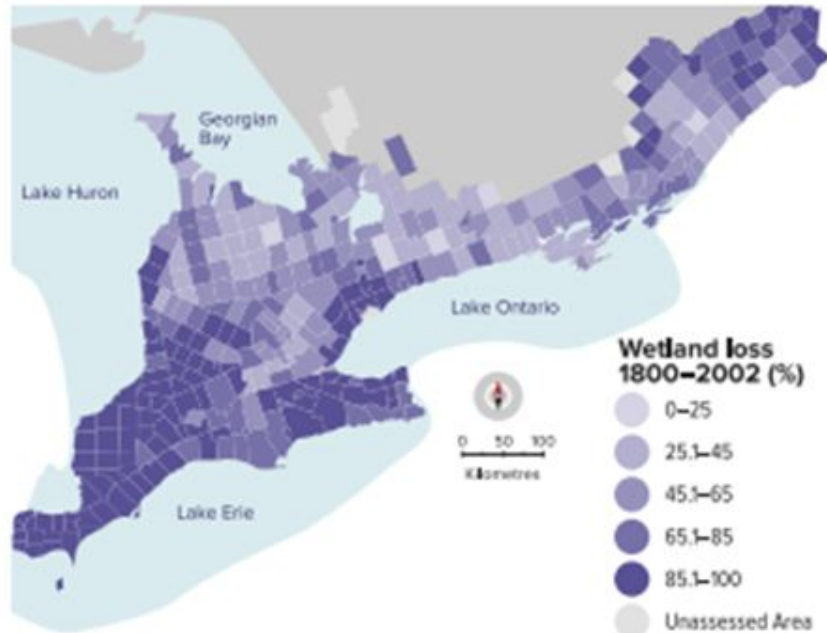




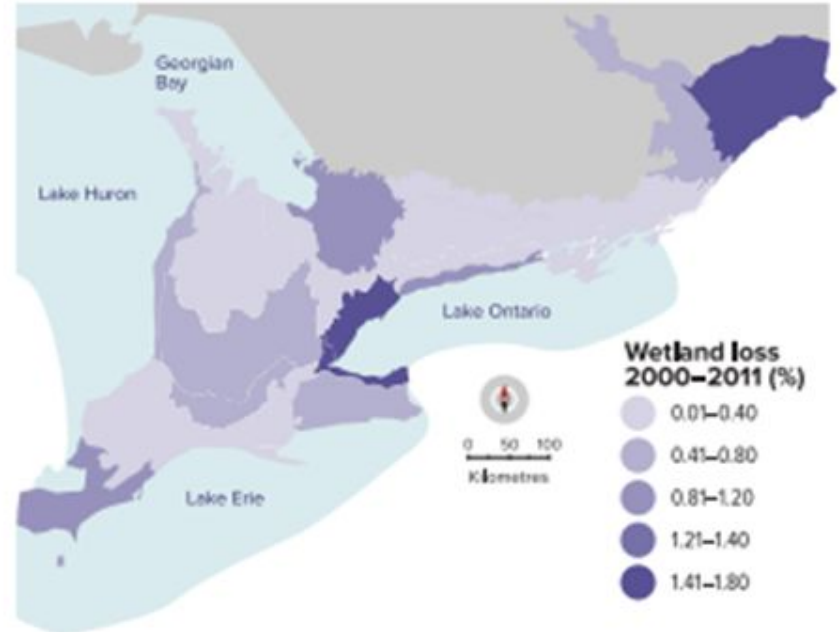


# Climate And Biodiversity Crisis

**FIGURE 3: Wetland loss in the Mixedwood Plains Ecozone**




State of Ontario's Biodiversity Report 2010: Loss of original wetland area by township, from 1800 to 2002 (1.4 million ha)



State of Ontario's Biodiversity Report 2015: Loss of wetlands by ecodistrict, between 2000 and 2011 (6,152 ha)



An aerial photograph of a suburban neighborhood with rows of houses, streets, and some greenery. A large, semi-transparent green circle is centered over the image, containing white text. To the right of the circle, a 3D architectural rendering of a modern urban park is visible, featuring winding paths, trees, and people walking. The background on the right shows tall, grey skyscrapers.

**From urban  
sprawl to high  
density with  
green  
infrastructure**

**Pressure  
government  
to make hard  
choices**





# Support Local Action

Join a local environmental group to work on climate action - find actions that align with your values and ability:

- Volunteer
- Donate
- Sign petitions
- Join a civil disobedience action (eg. protest)
- Write to your elected officials and bureaucrats (or run for office yourself!)
- I like to do 1 action a week to make the planet a better place

**Business can  
adapt to  
change and  
while difficult -  
it's necessary**







**Shift from a  
disposable  
economy to a  
circular  
economy**



**Shift from an  
extractive  
economy to a  
regenerative  
economy**



Bring us all  
your clothing, even  
worn out towels  
or those  
old drapes you  
no longer need.

If we don't  
donate it  
we recycle it!



arkham  
tile  
cling



# Stay Connected

- ▶ Sign up for our e-newsletters (London Environmental Network & Green Economy London)
- ▶ Come to our events (see our events calendar online) at [londonenvironment.net](https://londonenvironment.net)
- ▶ Follow our Social Media:
  - ▶ Facebook: London Environmental Network
  - ▶ Instagram & Twitter: @LondonEnviroNet
- ▶ Volunteer for an environmental organization



# Our Supporters





An aerial photograph of a modern urban landscape. The scene is dominated by numerous high-rise apartment buildings, many of which feature green roofs. A winding river or canal flows through the center of the city, flanked by lush green trees and pedestrian walkways. The sky is overcast with grey clouds. The overall tone is a mix of urban development and nature integration.

# Thank you & Questions

Sentiment without action is the ruin of the soul.  
*Edward Abbey*